



  
**SENsus**



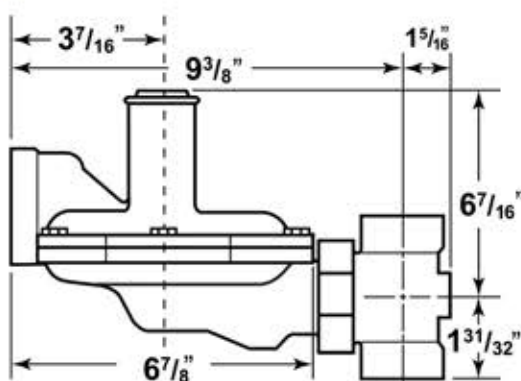
## Gas Pressure Regulator Series 143

For outdoor installations, it is recommended that the regulator be installed so that the regulator vent faces downward to avoid the potential for water and other foreign matter entering the regulator and interfering with the proper operation of the regulator.

### Technical data

Valve Body	Cast Iron - 125 psig working pressure
Spring and Lower Case	Die-Cast Aluminum
Orifice	Aluminum
Fulcrum Pin	Stainless Steel
Valve Seat	One piece molded Buna-N
Valve Stem	Fiberglass reinforced nylon
Throat/Support/Stem	Acetal insert
Diaphragm Plate	Plated Steel
Diaphragm	Nylon fabric-reinforced Buna-N with full 26 in <sup>2</sup> effective area
Vent and Valve	Polyethylene valve and seat, 1" NPT vent
Operating Temperature	-20° to +150° F (-28.9° to +65.5° C)
Corrosion Protection	Cases dip primed chromate conversion coating, enamel topcoat
Internal Relief Valve	Set to relieve at approximately 7-10" w.c. above normal outlet pressure setting

### Dimensions



### Valve Body Sizes

#### Straight

3/4" x 3/4"

3/4" x 1"

3/4" x 1-1/4"

1" x 1"

1" x 1-1/4"

1-1/4" x 1-1/4"



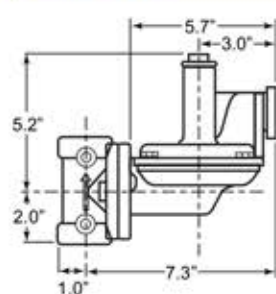
## Gas Pressure Regulator Series 496

For outdoor installations, it is recommended that the regulator be installed so that the regulator vent faces downward to avoid the potential for water and other foreign matter entering the regulator and interfering with the proper operation of the regulator.

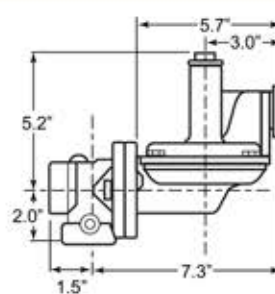
### Technical data

Valve Body	Cast Iron - 125 psig working pressure
Spring and Lower Case	Die-Cast Aluminum
Orifice	Aluminum
Fulcrum Pin	Stainless Steel
Valve Seat	One piece molded Buna-N seat
Valve Stem	Zamak
Throat/Support/Stem Guide	Cast aluminum integral to lower case
Diaphragm Plate	Plated Steel
Diaphragm	4" Molded, roll-out polyester fabric reinforced Buna-N
Vent and Valve	Polypropylene valve and seat, 1" NPT vent
Adjustment Screw	ABS cycolac
Closing Cap	ABS cycolac with internal relief valve stop and a hole for available tamper seal wire
Operating Temperature	-20° to +150° F (-28.9° to +65.5° C)
Corrosion Protection	Chromate converted castings, e-coated or primed with enamel topcoat
Internal Relief Valve	Set to relieve at approximately 7-10" w.c. above normal outlet pressure setting

### Dimensions



496-20 Straight Body  
All Outlet Sizes



496-10 Angle Body  
3/4" and 1" Outlet ONLY

### Valve Body Sizes

Straight	Angle
3/8" x 3/8"	-
1/2" x 1/2"	-
3/4" x 3/4"	3/4" x 3/4"
3/4" x 1"	3/4" x 1"
1" x 1"	1" x 1"